



# MANAGING BIODIVERSITY : KNOWLEDGE, TOOLS AND INITIATIVES

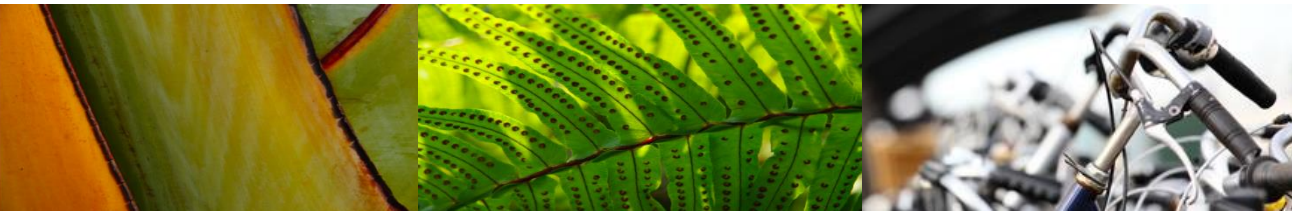
SIDE-EVENT, 3RD GPBB MEETING, MONTRÉAL, CANADA  
OCTOBER 2, 2013



# THE BUSINESS AND BIODIVERSITY WORKING GROUP

CLAUDE FROMAGEOT

YVES ROCHER GROUP - DIRECTOR OF ORÉE





Non-profit  
Organization

Orée is the  
**French Initiative**  
**of the Global Partnership**  
for Business and Biodiversity

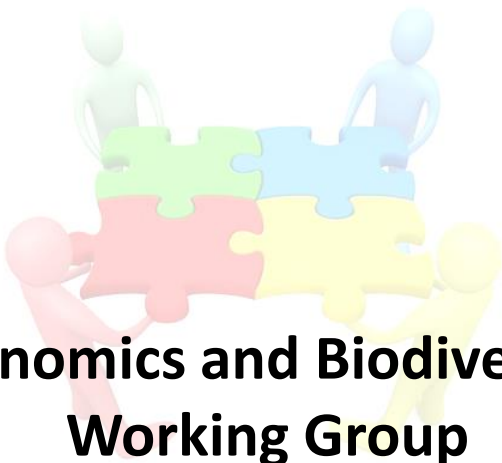
1992

7 priorities

Variety of  
stakeholders

discuss  
environment  
management solutions

# ORÉE'S WORKS ON ECONOMICS & BIODIVERSITY



« **Economics and Biodiversity** »

**Working Group**

40 participants

Since 2006



**2 thesis**

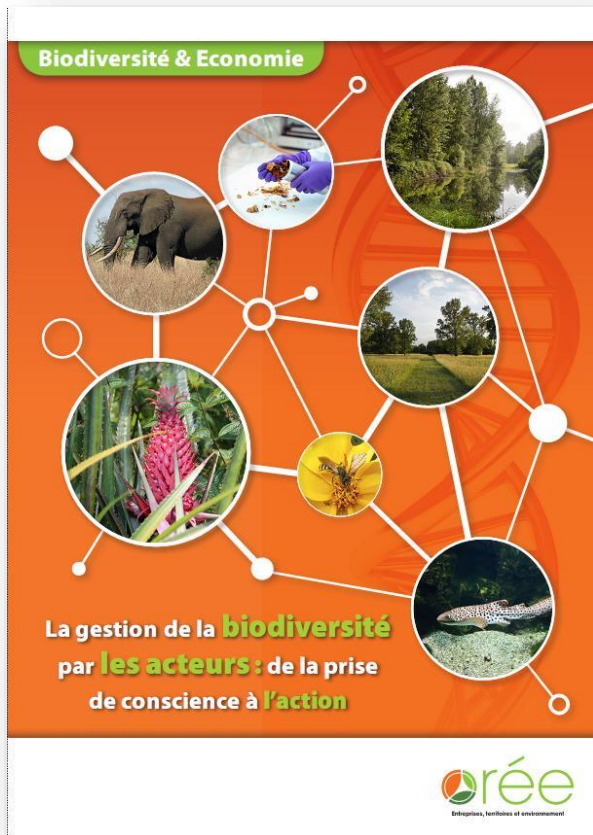
2nd one in progress

since 2012



**3 Papers**

# OCTOBER 22ND 2013...

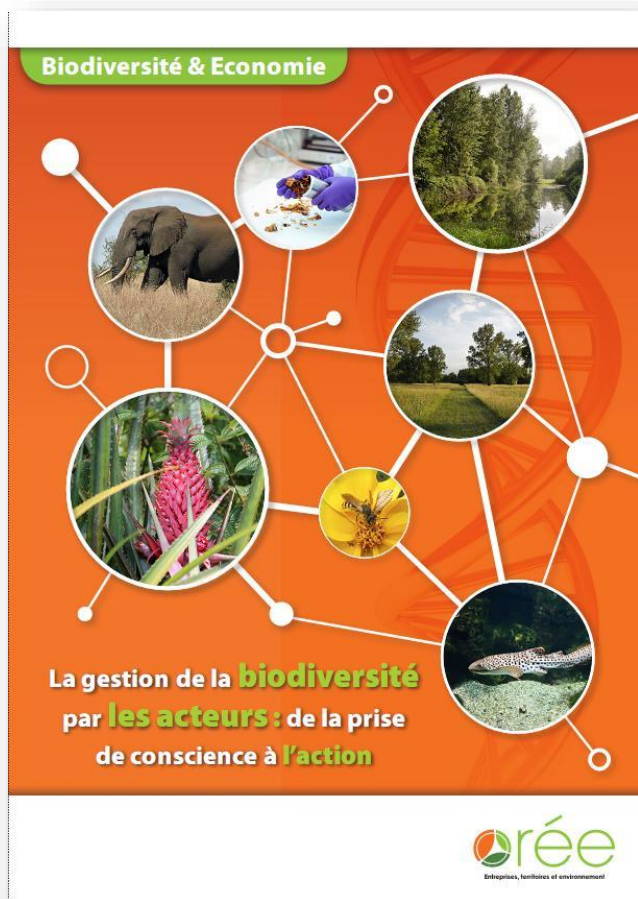


Orée's new paper :

« Managing organizations' interactions with biodiversity »

To be launched in Paris on  
October 22<sup>nd</sup> 2013 !

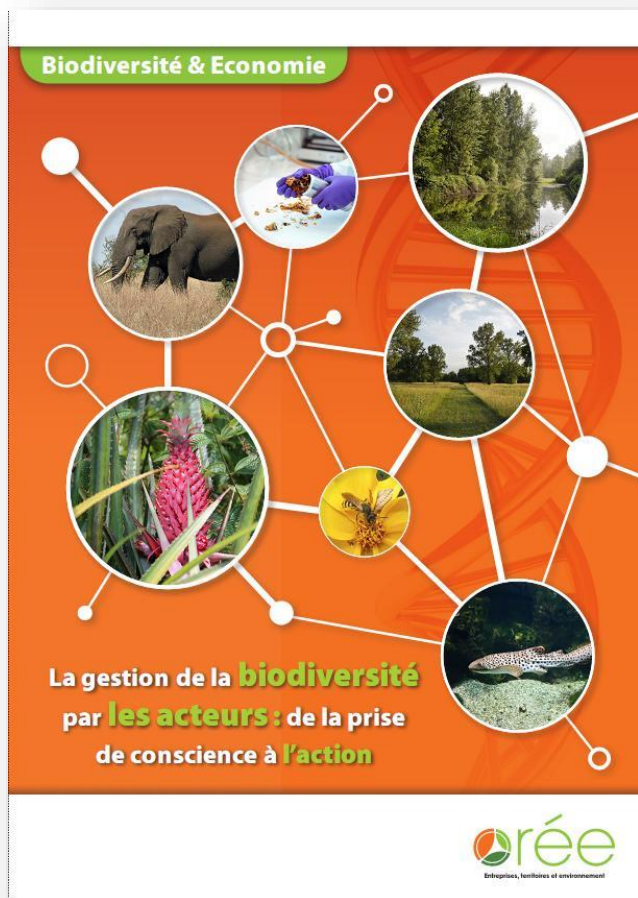
# ORÉE'S NEW PAPER ABOUT BIODIVERSITY MANAGEMENT



## Summary :

1. Introduction
2. The reconciliation of economic activities and Biodiversity
3. Stakeholders' awareness about Biodiversity issues
4. Biodiversity integration into products and services ecodesign
5. Biodiversity management at the territorial scale
6. Prospects
7. Conclusion

# ORÉE'S NEW PAPER ABOUT BIODIVERSITY MANAGEMENT



## Several entry points :

- Tools for analysis and awareness
- Product
- Business site
- Territory

# ORÉE'S NEW PAPER ABOUT BIODIVERSITY MANAGEMENT

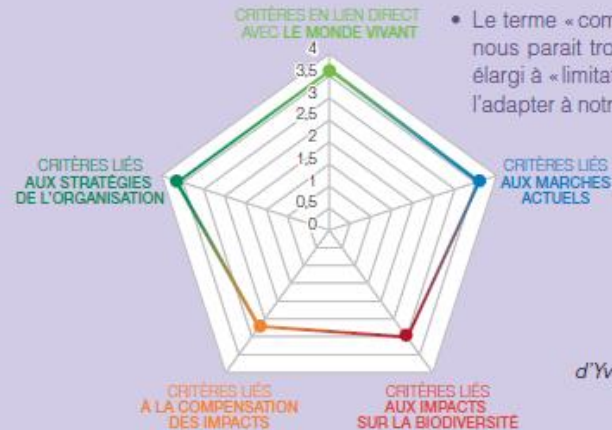
## 16 business or local authorities feedbacks

avec cet indicateur composite que son activité avait une forte interdépendance au végétal et de ce fait un enjeu vis-à-vis de la biodiversité. A partir de ce constat, une étude a eu pour objectif de piloter cette interdépendance de manière responsable en s'appuyant sur l'étude d'un produit, un shampoing.



Sur les critères de impacts, nous nous sommes penchés sur la pertinence de la notation monétaire et les impacts de l'activité. Cela a paru non applicable au shampoing, les données existantes ne sont pas directement liées au produit. La notation est donc restée comptable et reste comptable, modifiant ainsi

Le terme « compensation des impacts » nous paraît trop restrictif et nous proposons de l'élargir à « limitation des impacts » afin de mieux refléter la réalité.



d'Yves





*All documents are available for free on:*

**[www.oree.org](http://www.oree.org)**

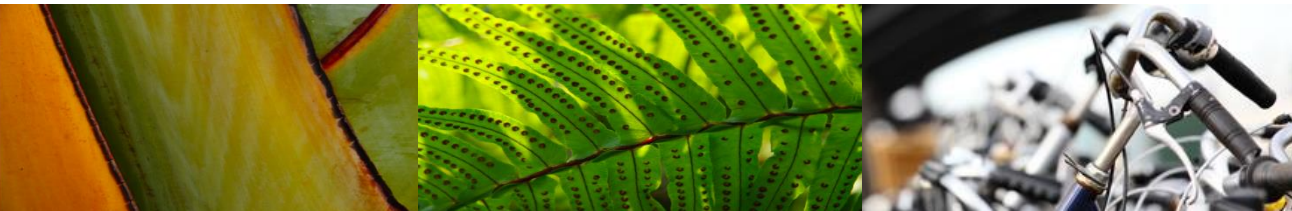
*Contact :*

**[leriche@oree.org](mailto:leriche@oree.org)**

**[ionescu@oree.org](mailto:ionescu@oree.org)**

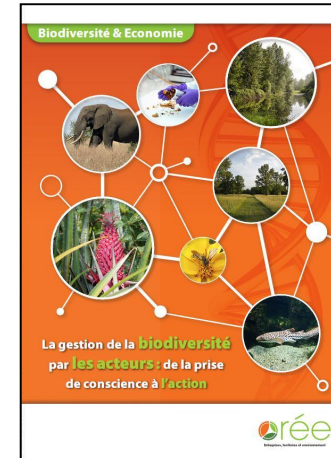
# INTEGRATING BIODIVERSITY AND ECOSYSTEM SERVICES (BES) INTO ORGANISATIONS' STRATEGY

CIPRIAN IONESCU, PHD STUDENT, ASSOCIATION ORÉE



# BIODIVERSITY AND ECONOMICS WORKING GROUP

- Since **2006**
- Subgroup « **Operational management** »
- Subgroup « **Accounting** »



**PhD thesis** : Paths for the integration of the businesses and biodiversity interrelations in strategy

**New PhD thesis** : Conception of operational tools  
(long-term and incentive)



# THESIS WORKS

## ■ Why use accounting ?

- Decision making system
- Used by all economic agents

## ■ Environmental accounting

- Quantitative Approaches
- Environmental expenses
- Externalities calculations

## ■ Orée's approach

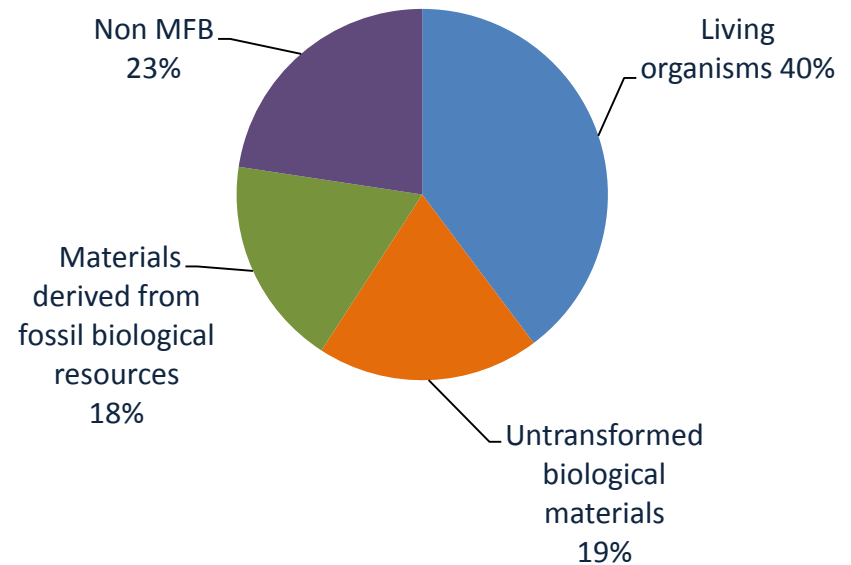
- Build an accounting framework designed to manage every interactions between organisations and BSE, insuring their co-viability
- **Work in progress** : study aimed at characterizing **dependances** (Houdet, 2010)
  - **Accounting flows of materials derived from biodiversity (FMB)**
  - **Accounting ecosystem services (ES)**

# THESIS WORKS

## ■ FMB accounting, by transformation level

- FMB distribution in the expenses of an organic cotton farm (theoretical case study, Orée working group, 2013)

→ Depends on 60% of untransformed biological resources



## ■ ES accounting

- ES flows **identification**
- Estimation of the ES **availability**
- Costs-based **economic valuation** of ES

→ Which type of value ? Which valuation methods ? How to integrate them into accounting systems? How to benefit from ES without compromising the ecosystems' viability?

# THESIS WORKS : NEXT STEPS

- **Emergence of new in-house strategies**
  - Unavailable ES → (Avoidable) costs → Restoration of ecosystems
  - Available ES → (Free) Benefits → Ecosystems management
- **Multiple Stakeholders : What kind of coordination ?**
  - Market mechanisms ?
  - Right of access / Right of use ?
  - Common goods ?

# THESIS WORKS : NEXT STEPS

- **Emergence of new in-house strategies**
  - Unavailable ES → (Avoidable) costs → Restoration of ecosystems
  - Available ES → (Free) Benefits → Ecosystems management
- **Multiple Stakeholders : What kind of coordination ?**
  - Market mechanisms ?
  - Right of access / Right of use ?
  - Common goods ?

## THANK YOU FOR YOUR ATTENTION

[IONESCU@OREE.ORG](mailto:IONESCU@OREE.ORG)

[WWW.OREE.ORG](http://WWW.OREE.ORG)

# MISSION ÉCONOMIE DE LA BIODIVERSITÉ

## MAKING NATURE A SOUND INVESTMENT

3rd meeting of the Global Partnership for  
Business and Biodiversity, Montreal

Aurélien Guingand  
Environmental Economist



CDC Biodiversité

GROUPE

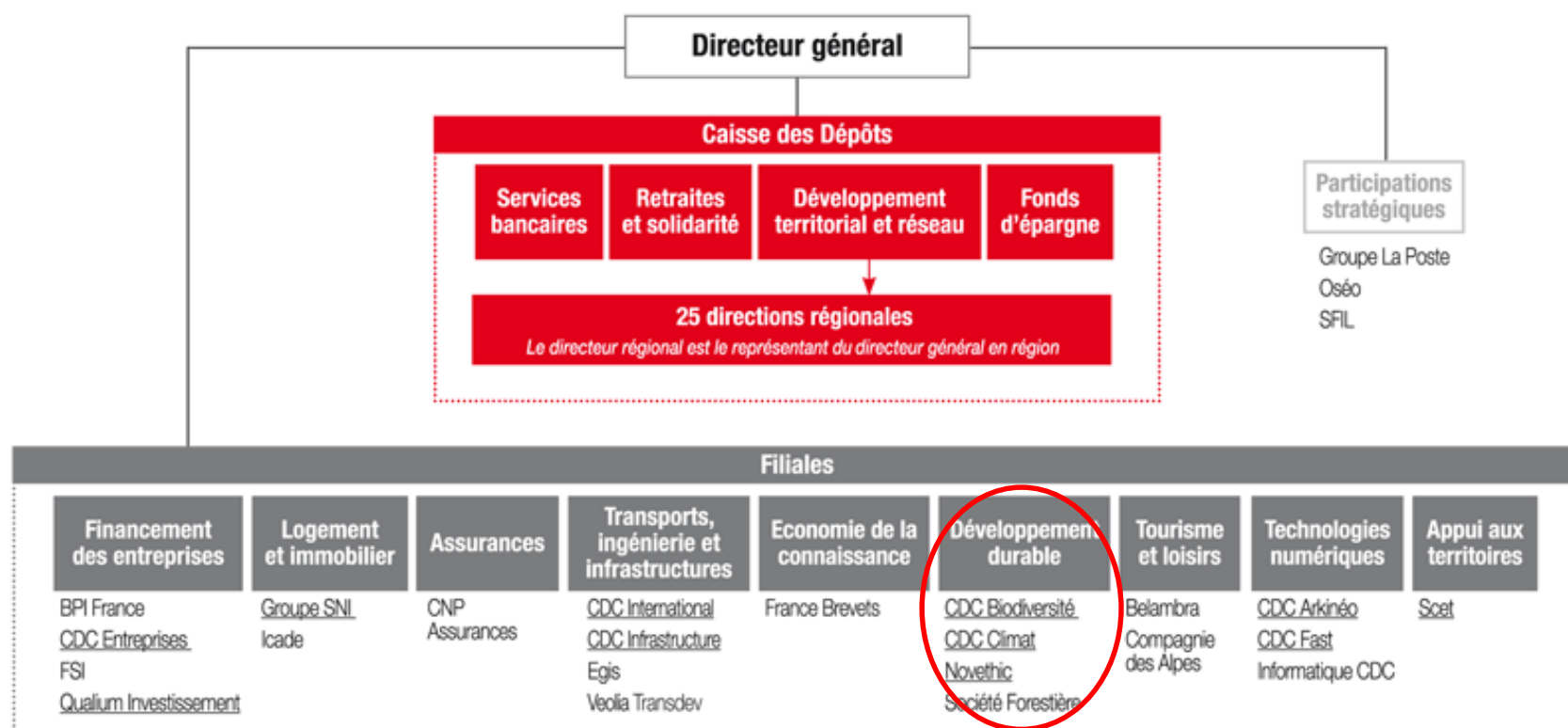




# The Caisse des dépôts Group (CDC)

## Organigramme du groupe Caisse des Dépôts

Légende : Filiale à 100% - Autre filiale



Février 2013

# Contents - Managing biodiversity : knowledge, tools, and initiatives



I) Our approach of biodiversity offsets

II) Our vision of payments for ecosystem services (PES)

# Our approach to biodiversity offsets

Biodiversity offsets : measurable conservation outcomes resulting from actions designed to compensate for residual biodiversity impacts arising from project development.



## Offsets on a case-by-case basis

Example of a project:

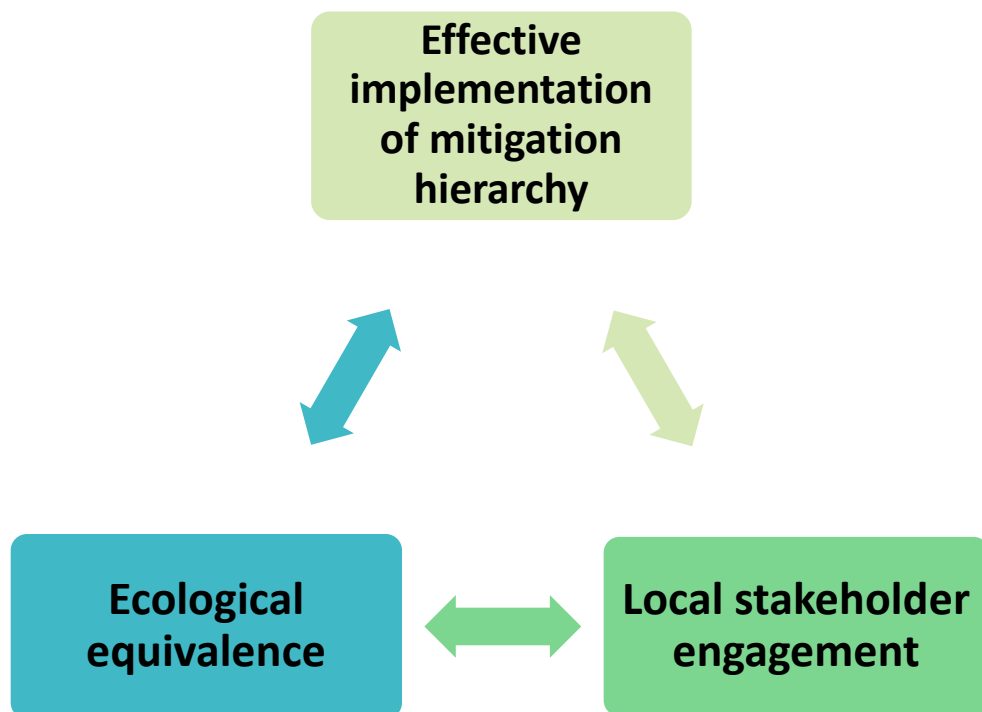
- ➔ A65 highway between Pau and Bordeaux.
- ➔ 1 372 ha of natural and species habitats to preserve or restore over a 60 year period.



## Pilot conservation banking project

- Operation « Cossure » in the Crau Plain region in collaboration with the French Ministry of Ecology
- ➔ First Natural Asset Reserve in Europe (ex-ante offset scheme)
  - ➔ Restoration of 357 hectares of coussouls, a unique ecosystem home to rare French and European animal species and wild plant communities

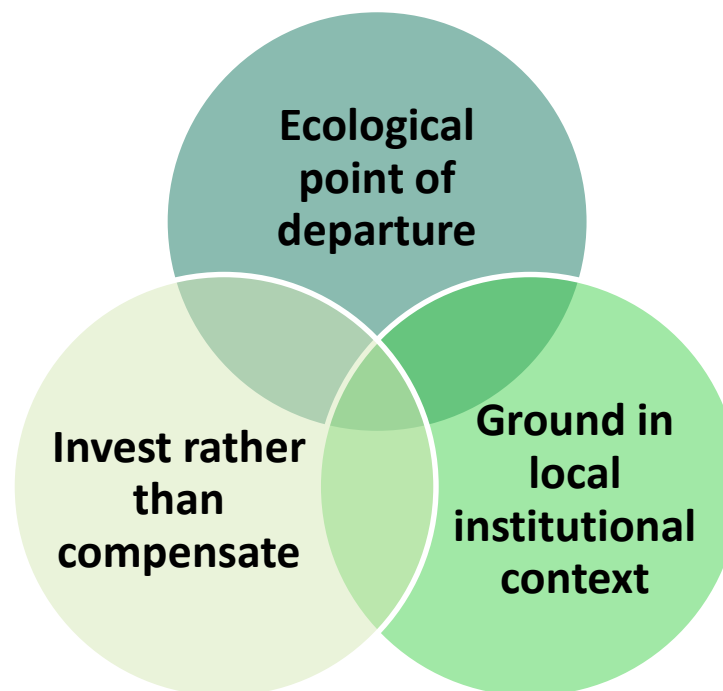
# Guiding principles for biodiversity offsets



# Guidelines for Payments for Ecosystem Services implementation



**PES** : contractual agreements between users of ecosystem services and land managers in a position to act on ecosystem service provision, such agreements being subject to the condition that they maintain or restore a pre-defined ecosystem service in exchange for a payment.



[www.cdc-biodiversite.fr](http://www.cdc-biodiversite.fr)

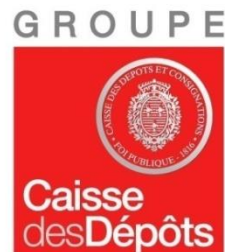
[www.mission-economie-biodiversite.com](http://www.mission-economie-biodiversite.com)

Thank you for your attention !

CDC Biodiversité – Mission Economie de la Biodiversité

102 rue Réaumur - 75002 Paris - France

Ph : +33 (0)1 76 21 75 00



Third Meeting of the Global Partnership for Business and Biodiversity,  
MONTREAL, 02/10/2013

## Biodiversity initiative in COLAS operated quarries and gravel pits



# COLAS and its subsidiary SINTRA

- COLAS, the world leader in the maintenance and construction of transport infrastructure; 8<sup>th</sup> producer of aggregates in the world
- SINTRA, the largest road construction company in Quebec
  - Production of construction material and wide array of civil engineering work is our speciality.
  - Due diligent, Sintra always finds new avenues to protect the environment.





# Biodiversity initiative in COLAS operated quarries and sand & gravel operations

## 1. Actions to promote biodiversity:

- facilitate the presence and the living conditions of at least one protected or endangered species
- or install and maintain beehives on our production sites



# Biodiversity initiative in COLAS operated quarries and sand & gravel operations

2. Additional requirement #1: local partnership with knowledgeable players
  - biologists, beekeepers, nature preserves, regional/national parks, NGOs, etc.
3. Additional requirement #2: educational action
  - Familiarize the local communities with the species (including bees), habitats and ecosystems.



# A remarkable species or a beehive in every COLAS quarry or sand & gravel operation in the world



# A remarkable species or a beehive in every COLAS quarry or sand & gravel operation in the world





**THANK YOU VERY MUCH !**

**CONTACTS :**

[CLAUDE.FROMAGEOT@YRNET.COM](mailto:CLAUDE.FROMAGEOT@YRNET.COM)

[IONESCU@OREE.ORG](mailto:IONESCU@OREE.ORG)

[AURELIEN.GUINGAND@CDC-BIODIVERSITE.FR](mailto:AURELIEN.GUINGAND@CDC-BIODIVERSITE.FR)

[MBOULIANNE@SINTRA.CA](mailto:MBOULIANNE@SINTRA.CA)

